

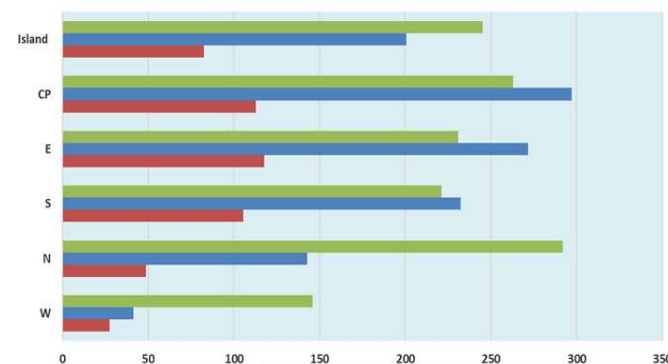
Mauritius Meteorological Services

Mean Rainfall for 1-15 May 2025 updated 22 May 2025

Mauritius

The first fortnight of May 2025 turned out to be a very wet with 201 mm, which represents 245 % of the long-term mean.

The Central Plateau recorded the highest rainfall of 297 mm and the North observed the highest percentage of 292 % of the long-term mean.



	W	N	S	E	CP	Island
■ Percentage (%) of Long Term Mean for 1st half May 2025	146	292	221	231	263	245
■ Actual Mean rainfall for 1st half May 2025 (mm)	41	143	232	272	297	201
■ First Half LTM (1991-2020) for May Rainfall (mm)	28	49	105	118	113	82

Outer Islands

		Amount (mm)		
Stations		Actual Rainfall	LTM Rainfall	% of LTM
Rodrigues	Pointe Canon	155	44	352
	Plaine Corail	87	40	218
	Citronelle	172	64	269
Agalega		13	59	55
St Brandon		-	-	-

Very wet atmospheric conditions prevailed at Rodrigues

Well below normal rainfall was observed over Agalega

Currently data is not available for St Brandon

The right of publication in print, electronic and any other form is reserved by the Meteorological Services. Any part of this document may be reproduced provided complete source is acknowledged or after authorization from:

**Acting Director, Meteorological Services,
St Paul Road, Vacoas.**

Tel: 6861031/32, Fax: 6861033, email: meteo@intnet.mu

Updated on: 22 April 2025